

*A world away... not far away*

HAMILTON ISLAND **\$149**<sup>pp\*</sup>  
**BOOK NOW FROM**

Kids Stay and Eat Free<sup>^</sup> | Includes return ferry transfers<sup>\*</sup>



HAMILTON ISLAND  
GREAT BARRIER REEF AUSTRALIA

# THERE IS MORE TO CHOOSE FROM ON HAMILTON ISLAND

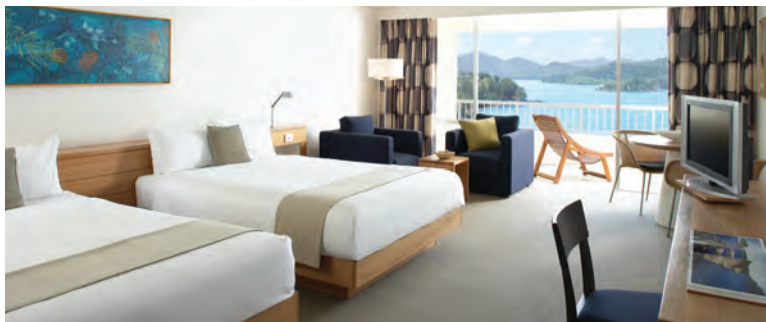
Choose between a variety of accommodation to suit your taste and budget, from cosy garden bungalows, to self-catering, or the ultimate luxury of qualia. Enjoy over 60 different activities available on land, in the air, in the water and on the water, along with a range of island pools, 20km of bushwalking trails and a wide selection of retail shops. Delight in great food and wine in a variety of restaurants, with everything from casual to fine dining. Discover the Great Barrier Reef and Whitehaven Beach with direct cruises departing daily.

Access to Hamilton Island is easy with a number of direct boat transfers from Port of Airlie that operate regularly each day. With its own commercial airport you can also take a short direct flight from Sydney, Melbourne, Brisbane or Cairns, or sail here in your own yacht and moor in the 250+ berth Hamilton Island Marina.

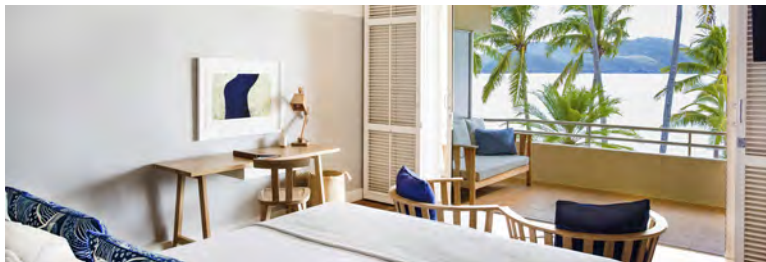
## VARIETY OF ACCOMMODATION



Palm Bungalow



Coral Sea View Room, Reef View Hotel



Beach Club Room



Windward Pavilion



Yacht Club Villa

### Palm Bungalows - Island-style bungalows

Charming and private, the Palm Bungalows are a popular choice for couples and small families seeking comfort and convenience. Well-positioned between Catseye Beach and the Marina Village, the Palm Bungalows have a relaxed, bright and airy feel with modern amenities.

**Max. room capacity:** 2 adults and 2 children 12 years and under

### Reef View Hotel - Spacious hotel living

The Reef View Hotel features extremely spacious, well-appointed rooms all with private balconies overlooking landscaped gardens or the breathtaking vista of the Coral Sea. Reef Family Rooms are available for guests with children, offering an interconnecting room type. The Reef View Hotel also features the Pool Terrace Restaurant, Reef Lounge and Bar, a 35-metre pool and Tours and Activities Desk.

**Max. room capacity:** 4 people (Garden View and Coral Sea View Rooms), 2 people (King Coral Sea View Rooms and Reef Suites), 6 people (Reef Family Room)

### Beach Club - Boutique

With its absolute beachfront location, Beach Club offers the ultimate island holiday experience for couples. Set in landscaped gardens, the recently refurbished rooms all face directly onto Catseye Beach, each with their own private courtyard or balcony. Exclusive guest facilities include a restaurant, lounge, bar and infinity-edge pool.

**Note:** Beach Club does not cater for persons under the age of 18 years.

**Max. room capacity:** 2 people

### qualia - Premium luxury

qualia is a unique Australian expression of luxury. Feel time unravel in one of the 60 exquisitely appointed pavilions and enjoy exclusive guest facilities including two pools, two restaurants, gymnasium, library, business centre and Spa qualia.

**Note:** qualia does not cater for persons under the age of 16 years.

**Max. room capacity:** 2 people (Leeward and Windward Pavilions), 4 people (Beach House)

### Holiday Homes - Self-catering

Hamilton Island's range of privately owned self-catering Holiday Homes accommodate one to 8 people, in one to four bedroom configurations, across a range of categories. The location, layout, appearance and surroundings of each varies, however each has a fully equipped kitchen, laundry and use of a four-seater golf buggy, so you are always within easy reach of all the island's facilities.

**Note:** Image shown is an example only. Your allocated Holiday Home may differ in furnishings and layout. Minimum night stay applies on all Holiday Home bookings. **Bonus:** Book within 30 days of arrival and receive 2 return ferry transfers.

**Kids Stay and Eat Free** – Bring the kids on holiday and at selected accommodation, there's no charge for children aged up to 12 years when sharing a room with their parents and using existing bedding. Plus, kids aged up to 12 eat for free when dining with their parents at selected restaurants and choosing from the children's menu.

# A VARIETY OF DINING OPTIONS

On Hamilton Island, you can choose from almost as many restaurants as you'd expect to find on the mainland. From gourmet pizzas to an indulgent seafood lunch, Hamilton Island has it all. There is also a range of takeaway outlets if you are looking for something a little more casual, plus a choice of bars to relax and unwind in. For those that are self-catering or planning a casual picnic, make sure to visit the island's new **IGA Supermarket and Bottle Shop**, which offers a range of products including fresh fruit and vegetables, meats, deli produce and more.

## Restaurants and Cafés

- / Bommie
- / The Clubhouse
- / coca chu
- / Hamilton Star
- / Cruise and Dine
- / Manta Ray
- / Marina Café
- / Marina Tavern
- / Mariners
- / One Tree Hill
- / Pizzeria and Gelato Bar
- / Pool Terrace
- / Romano's
- / Sails
- / TAKO
- / WILD LIFE
- Hamilton Island Café

## Takeaways and Bars

- / Bob's Bakery
- / Bommie Deck
- / Bougainvillea Bar
- / Garden Bar
- / Ice Cream Parlour
- / Island Bar
- / Marina Café
- / Marina Tavern
- / One Tree Hill
- / Pizzeria
- / Popeye's Fish & Chips
- / Reef Lounge
- / Verandah Bar at Sails



# OVER 60 DIFFERENT ACTIVITIES

Whether you're sporty or relaxed, you'll find the perfect way to unwind on Hamilton Island.

**Land** Hamilton Island Golf Club – 18-hole championship course (see back page for more information)  
/ Bushwalking – over 20km of trails including the new South East Head trail / WILD LIFE Hamilton Island wildlife park  
/ Sunset cocktails at One Tree Hill / Go-karts / Golf driving range / Mini golf / Climbing wall / Games arcade  
/ Spa wumurdaylin day spa / Art classes / Sports club and gym / Tennis / Off Road Adventure Tours / Kids quads  
/ Island Bowling – Kegel 9-pin bowling / Park Run / Dent Dash / Dent Yoga / Audio Tours in five languages  
/ Retail outlets / Clownfish Club kids club / Kids Fun Zone - jumping castle, face painting, arts and crafts – every Sunday and more frequently throughout Australian school holidays / Laser tag

**Air** Helicopter, fixed wing and seaplane flights available over the Whitsundays, Whitehaven Beach, the Great Barrier Reef and Heart Reef / Parasailing

**Water** Full day trips to the Great Barrier Reef / Full and half day trips to Whitehaven Beach / Sailing – bareboat and chartered / Whitsunday Islands and Great Barrier Reef Dive and Snorkel tours / Twilight and dinner cruises  
/ High-speed jet boat rides / Sea kayaking / Game fishing / Dinghy hire / Jetski tours / Whale watching (Jul–Sept)  
/ Various island pools / Scuba diving / Wakeboarding and water-skiing / Tube rides / Parasailing / Catamarans  
/ Windsurfing / Kayaks / Snorkelling / Stand up paddleboards / PADI open water learn to dive / Turtle discovery tour



# HAMILTON ISLAND GOLF CLUB

18-hole, par 71 championship course, measuring 6,120 metres / Designed by five-time British Open winner Peter Thomson to challenge all levels of golf enthusiasts / The only golf course on its own island in Australia, offering spectacular views / Practice putting and chipping greens and golf tuition with the resident Golf Pro  
/ Clubhouse with a restaurant, bar and pro shop / Located on neighbouring Dent Island, access is via a short Island Links boat transfer from the Hamilton Island Marina (beside Manta Ray) / Green fees include return boat transfers and use of a two seater golf buggy plus GPS on-course

**Lunch Special** – Includes complimentary tour of Hamilton Island Golf Club, two course a la carte lunch at the Clubhouse and return transfers from Hamilton Island to Dent Island.

**Ask about our overnight Golf Getaway package!**



**Hamilton Island App** – Download our handy pocket-guide to everything there is to see and do on Hamilton Island. Features include a 'what's-on' guide with detailed listings on daily activities and entertainment, island maps, restaurant and bar listings, shuttle bus and ferry timetables, live weather updates and more. Featured on iPhone and Android, and it's free!



There's no need to travel a long way for an amazing holiday. Hamilton Island has it all, and as one of our neighbours, you're entitled to special pricing.

Room Type	Standby Rates	Advanced Booking
Palm Bungalows	\$155pp*	\$205pp*
Reef View Hotel		
Garden View Room (levels 1-4)	\$149pp*	\$185pp*
Coral Sea View Room (levels 5-18)	\$180pp*	\$230pp*
King Coral Sea View Room (levels 13-18)	\$195pp*	\$245pp*
Reef Family Room (levels 4, 6-8, 10-18)	\$230pp*	\$290pp*
Beach Club**	\$330pp*	\$360pp*
qualia^^	Please call 1300 780 797 for rates and inclusions	
Hamilton Island Holiday Homes	Please call 1300 780 797 for rates and inclusions	

#### Inclusions

- / Two return transfers from Port of Airlie to Hamilton Island included
- / Return Hamilton Island Marina/airport to accommodation transfers
- / Complimentary use of windsurfers, catamarans, kayaks and snorkelling equipment
- / Complimentary use of the scheduled Island Shuttle service
- / Complimentary wireless internet access (download and speed limits may apply)
- / **KIDS STAY & EAT FREE**<sup>^</sup> (conditions apply)
- / **BABY'S FIRST HOLIDAY** Hamilton Island provides a number of items that can be requested free of charge and delivered to your room for your arrival. The items on offer include products like baby cots, highchairs and jogger prams. A number of Convenience Shopping Items can also be ordered in advance.
- / \*\*Beach Club is exclusively for adults 18 years and over and includes a la carte breakfast daily
- / ^^qualia is exclusively for persons 16 years and over and includes a la carte breakfast daily

Ask about our:  
**Holiday Homes Special**

helloworld  
TRAVEL  
THE TRAVEL PROFESSIONALS

Helloworld Travel Mackay

☎ 4969 3600

🏠 58 Wood Street

Helloworld Travel Mt Pleasant

☎ 4942 1444

🏠 Mt Pleasant Centre

[www.helloworldtravelmackay.com.au](http://www.helloworldtravelmackay.com.au)



\*\*Prices are per person, per night, twin share, quoted in Australian dollars and inclusive of GST. Breakfast is an additional option at \$29 per person per day, and will increase to \$30 per person per day from April 1, 2019. Extra adult rate is \$115 per person per night including return transfers from Port of Airlie to Hamilton Island Marina. Two return ferry transfers are included per twin share room. All rates are subject to rate and room availability at time of booking. Availability is reviewed progressively. Standby rates can be booked only within 3 days (72 hours) prior to travel date and are valid for travel until 31 March, 2020. Advanced Booking rates available for travel to 31 March, 2020. Further conditions and blackout dates apply. Standby and Advanced Booking rates available to guests residing in the regional market only (between Port Douglas and Gladstone). ^Kids 0-12 years inclusive stay free when sharing with adults and using existing bedding at the Reef View Hotel or in a Palm Bungalow, and eat free from the kids menu when dining with parents in selected restaurants. \*\*Beach Club is exclusively for adults 18 years and over. ^^qualia is exclusively for persons 16 years and over. Cancellations and Amendments Policy (excludes Festive Season bookings): Cancellations and amendments received outside of 14 days prior to arrival will not incur a cancellations and amendments fee. Cancellations and amendments received within 14 days of arrival will be subject to a cancellations and amendments fee of 20% of the total booking value. Cancellations and amendments received within 7 days of arrival, 'no shows' and/or 'early departures' will be subject to a cancellations and amendments fee of 100% of the total booking value. Specific conditions apply for the festive period, 21 December 2019 - 5 January 2020.